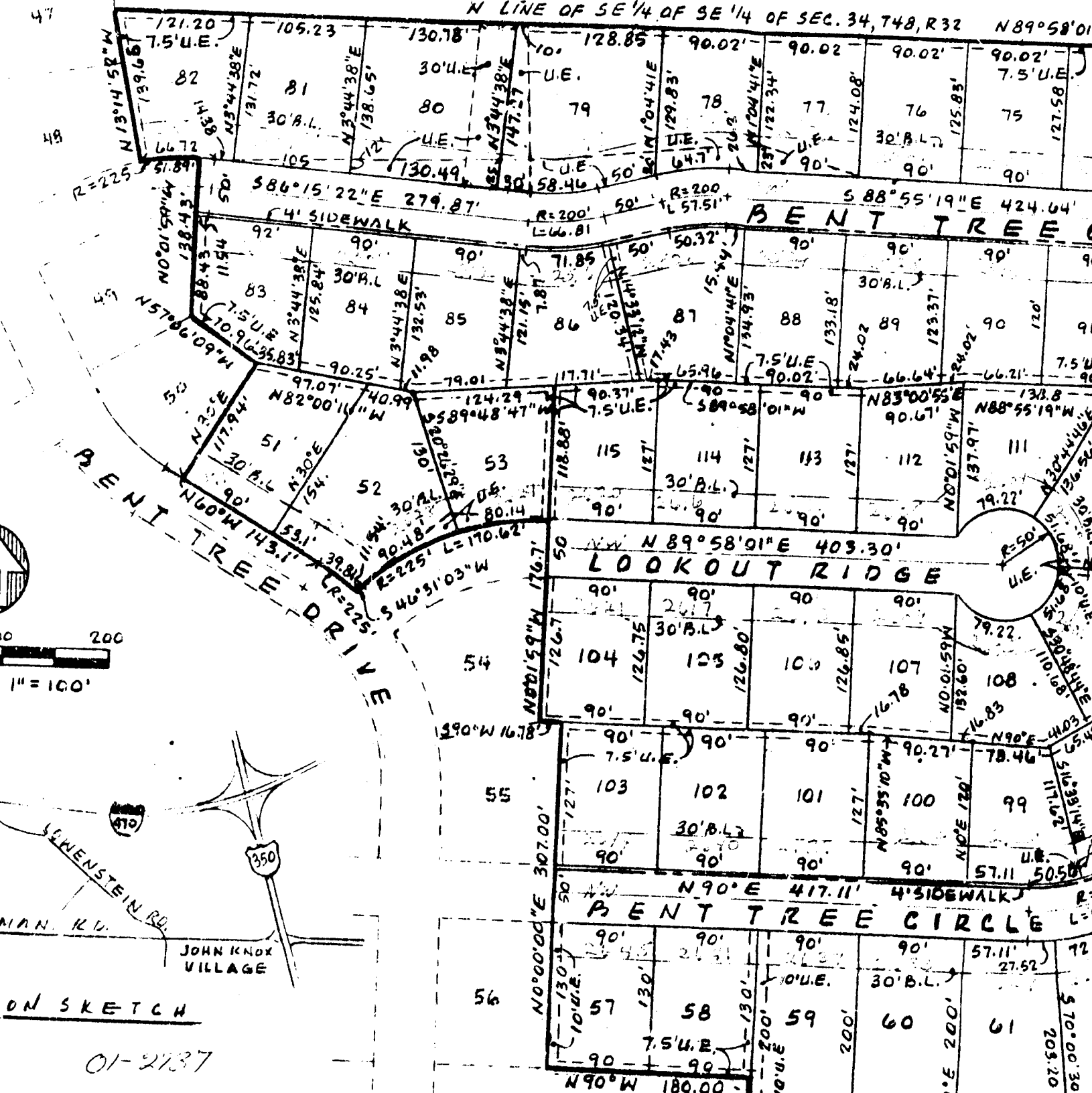


N LINE OF SE 1/4 OF SE 1/4 OF SEC. 34, T48, R32 N89°58'01"



DIVISION IN THE SOUTHWEST QUARTER OF THE SOUTHWEST QUARTER OF SECTION 34,  
 SUMMIT, JACKSON COUNTY, MISSOURI INCLUDING A REPLAT OF LOTS 51, 52  
 1ST PLAT, DESCRIBED AS FOLLOWS; BEGINNING AT A POINT ON THE EAST LINE OF  
 LOT 1, ELMOOD FARM, A SUBDIVISION, THENCE WESTERLY ALONG A CURVE  
 OF 291.72 FEET AND A TANGENT BEARING AT THE LAST DESCRIBED POINT OF  
 S 87.15 FEET, (DEAD = 87.03'), THENCE S 47°30'00" W 232.39 FEET, THENCE  
 THENCE NORTHWESTERLY AND WESTERLY ALONG A CURVE TO THE LEFT HAVING A RADIUS  
 OF 72.01 FEET, THENCE N 57°59'18" W, A DISTANCE OF 72.01 FEET TO THE  
 CORNER OF LOT 2 IN SAID ELMOOD FARM; THENCE N 00°00'00" E 180.00 FEET TO THE  
 CORNER OF LOT 56; THENCE N 00°00'00" E 307.00 FEET TO THE CORNER OF LOT 55;  
 THENCE N 90°00'00" E 417.11 FEET TO THE CORNER OF LOT 54; THENCE N 89°58'01" E  
 403.30 FEET TO THE CORNER OF LOT 53; THENCE N 88°55'19" W 424.64 FEET TO THE  
 CORNER OF LOT 52; THENCE N 82°00'11" W 40.99 FEET TO THE CORNER OF LOT 51;  
 THENCE N 60°00'00" W 143.11 FEET TO THE CORNER OF LOT 50; THENCE N 57°06'10" W  
 109.61 FEET TO THE CORNER OF LOT 49; THENCE N 45°10'00" W 54.88 FEET TO THE  
 CORNER OF LOT 48; THENCE N 38°44'58" W 130.49 FEET TO THE CORNER OF LOT 47;  
 THENCE N 30°44'38" E 130.78 FEET TO THE CORNER OF LOT 46; THENCE N 21°11'38" E  
 128.85 FEET TO THE CORNER OF LOT 45; THENCE N 10°41'41" E 90.02 FEET TO THE  
 CORNER OF LOT 44; THENCE N 04°41'41" E 90.02 FEET TO THE CORNER OF LOT 43;  
 THENCE N 00°00'00" E 90.02 FEET TO THE CORNER OF LOT 42; THENCE N 00°00'00" E  
 90.02 FEET TO THE CORNER OF LOT 41; THENCE N 00°00'00" E 90.02 FEET TO THE  
 CORNER OF LOT 40; THENCE N 00°00'00" E 90.02 FEET TO THE CORNER OF LOT 39;  
 THENCE N 00°00'00" E 90.02 FEET TO THE CORNER OF LOT 38; THENCE N 00°00'00" E  
 90.02 FEET TO THE CORNER OF LOT 37; THENCE N 00°00'00" E 90.02 FEET TO THE  
 CORNER OF LOT 36; THENCE N 00°00'00" E 90.02 FEET TO THE CORNER OF LOT 35;  
 THENCE N 00°00'00" E 90.02 FEET TO THE CORNER OF LOT 34; THENCE N 00°00'00" E  
 90.02 FEET TO THE CORNER OF LOT 33; THENCE N 00°00'00" E 90.02 FEET TO THE  
 CORNER OF LOT 32; THENCE N 00°00'00" E 90.02 FEET TO THE CORNER OF LOT 31;  
 THENCE N 00°00'00" E 90.02 FEET TO THE CORNER OF LOT 30; THENCE N 00°00'00" E  
 90.02 FEET TO THE CORNER OF LOT 29; THENCE N 00°00'00" E 90.02 FEET TO THE  
 CORNER OF LOT 28; THENCE N 00°00'00" E 90.02 FEET TO THE CORNER OF LOT 27;  
 THENCE N 00°00'00" E 90.02 FEET TO THE CORNER OF LOT 26; THENCE N 00°00'00" E  
 90.02 FEET TO THE CORNER OF LOT 25; THENCE N 00°00'00" E 90.02 FEET TO THE  
 CORNER OF LOT 24; THENCE N 00°00'00" E 90.02 FEET TO THE CORNER OF LOT 23;  
 THENCE N 00°00'00" E 90.02 FEET TO THE CORNER OF LOT 22; THENCE N 00°00'00" E  
 90.02 FEET TO THE CORNER OF LOT 21; THENCE N 00°00'00" E 90.02 FEET TO THE  
 CORNER OF LOT 20; THENCE N 00°00'00" E 90.02 FEET TO THE CORNER OF LOT 19;  
 THENCE N 00°00'00" E 90.02 FEET TO THE CORNER OF LOT 18; THENCE N 00°00'00" E  
 90.02 FEET TO THE CORNER OF LOT 17; THENCE N 00°00'00" E 90.02 FEET TO THE  
 CORNER OF LOT 16; THENCE N 00°00'00" E 90.02 FEET TO THE CORNER OF LOT 15;  
 THENCE N 00°00'00" E 90.02 FEET TO THE CORNER OF LOT 14; THENCE N 00°00'00" E  
 90.02 FEET TO THE CORNER OF LOT 13; THENCE N 00°00'00" E 90.02 FEET TO THE  
 CORNER OF LOT 12; THENCE N 00°00'00" E 90.02 FEET TO THE CORNER OF LOT 11;  
 THENCE N 00°00'00" E 90.02 FEET TO THE CORNER OF LOT 10; THENCE N 00°00'00" E  
 90.02 FEET TO THE CORNER OF LOT 9; THENCE N 00°00'00" E 90.02 FEET TO THE  
 CORNER OF LOT 8; THENCE N 00°00'00" E 90.02 FEET TO THE CORNER OF LOT 7;  
 THENCE N 00°00'00" E 90.02 FEET TO THE CORNER OF LOT 6; THENCE N 00°00'00" E  
 90.02 FEET TO THE CORNER OF LOT 5; THENCE N 00°00'00" E 90.02 FEET TO THE  
 CORNER OF LOT 4; THENCE N 00°00'00" E 90.02 FEET TO THE CORNER OF LOT 3;  
 THENCE N 00°00'00" E 90.02 FEET TO THE CORNER OF LOT 2; THENCE N 00°00'00" E  
 90.02 FEET TO THE CORNER OF LOT 1.

PLATTED ELM  
 STATE OF MISSOURI